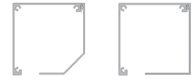


Part number	Description	Paint finish	Length in m ¹ Pack. Unit.
-------------	-------------	--------------	---

Apply the droparmscreen only in combination with Headboxes 75, 85 und 95. Attention !! Only applicable with bottom cover without lip).

Markisolette headbox 75 (Refer to chapter Screens 75) :

End fix bracket 75 slanted with spindle 4452 360/361- or without spindle 4452 365/366-
End fix bracket 75 squared with spindle 4453 100/102- or without spindle 4452 404/406-
Top cover screen 75
Bottom cover screen 75 slanted
Bottom cover screen 75 squared



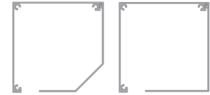
Markisolette headbox 85 (Refer to chapter Screens 85) :

End fix bracket 85 slanted with spindle 4452 180/181- or without spindle 4452 185/186-
End fix bracket 85 squared with spindle 4453 110/112- or without spindle 4453 114/116-
End fix bracket 85 rounded with spindle 4452 510/512- or without spindle 4452 514/516-
Top cover screen 85
Bottom cover screen 85 slanted
Bottom cover screen 85 squared
Bottom cover screen 85 rounded



Markisolette headbox 95 (Refer to chapter Screens 95) :

End fix bracket 95 slanted with spindle 4452 380/381- or without spindle 4453 000/002-
End fix bracket 95 squared with spindle 4453 120/122- or without spindle 4453 124/126-
Top cover screen 95
Bottom cover screen 95 slanted
Bottom cover screen 95 squared



The Markisolette can be equipped with the following side guides (Refer to chapter side guides screen)
The guides must be filled for the space that the hinge needs.

Alu side guide "HTF" 20 x 30 mm 6296 658/659-
Alu centre guide 20 x 45 mm 6296 677/678-
in combination with minimal 2 adapter blocks 4452 295/296/297/298/299-000



Alu snap-in side guide 27,6 x 30 mm 6296 667/668-
Alu snap-in centre guide 27,6 x 45 mm 6296 852/854-
in combination with minimal 1 x alu filling profile for klick side guides 6297 560-



Alu snap-in side guide 47,5 x 30 mm 6296 660-
This profile does not have to be filled.

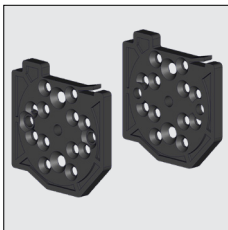


Alu side guide "LHTF" 60 x 30 mm 6296 792-

Use the nylon fixing plates below in combination with the end fix brackets without spindle. Motors and gear boxes can be directly fixed to the end plates. There are no fixing holes needed in the end fix bracket. The roller can be slid in and out of the top cover together with these plates.

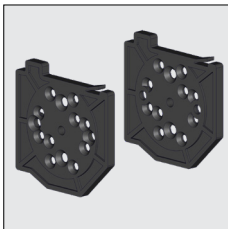
ATTENTION !!
On these fixing plates a patent number 1019354 has been granted.

Headbox 75



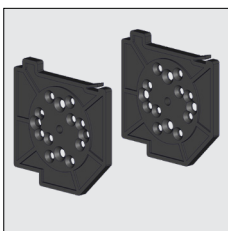
4452 675-080	Nylon fixing plate 75 without spindle, left	Grey	25
4452 677-080	Idem, right	Black	25

Headbox 85



4452 685-080	Nylon fixing plate 85 without spindle, left	Grey	25
4452 687-080	Idem, right	Black	25

Headbox 95

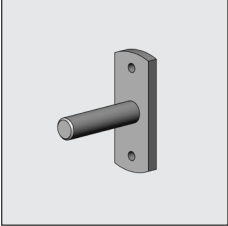



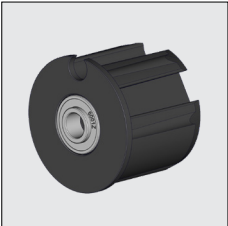
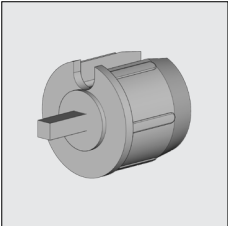
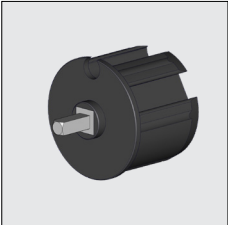
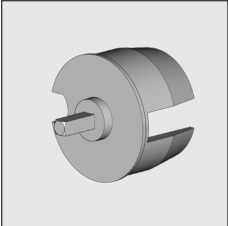


4452 695-080	Nylon fixing plate 95 without spindle, left	Grey	25
4452 697-080	Idem, right	Black	25

= Article will be sold out. Special orders remain possible.



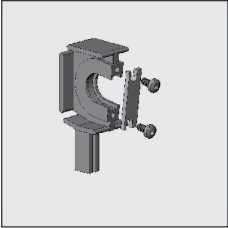
Markisolette Excellent®

Part number	Description	Paint finish	Length in m ¹ Pack. Unit.
Headbox 75-85-95			
	4210 498-080 Bearing pin 12 mm with fixing plate	Zinc-plated	10
	4210 484-000 Stainless steel screw M 6 x 10 mm with countersunk Philips head (For fixing the bearing pin to the fixing plate)		100
	4210 497-000 Nylon Washer 20 x 12 x 2 mm In combination with bearing roller bung 4470058-068		50
	4470 058-068 Nylon bearing roller bung 48 with slide bearing		10
	4452 225-068 Nylon bearing roller bung 63 incl. bearing with increased inner ring		10
	4470 061-000 Alu mono plug 48, with square spindle 7 mm		
	4470 071-080 Nylon mono plug 63, with square spindle 7 mm		25
	4470 067-000 Alu mono plug 63, with square spindle 7 mm		

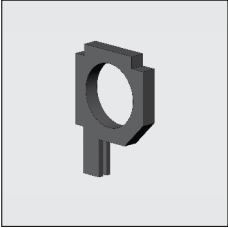
= Article will be sold out. Special orders remain possible.

Part number	Description	Paint finish	Length in m ¹ Pack. Unit.
-------------	-------------	--------------	---

Headbox 75



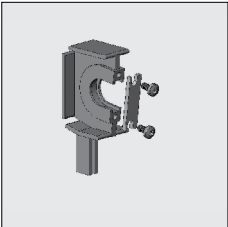
4452 114-068 Alu centre bracket Excellent 75



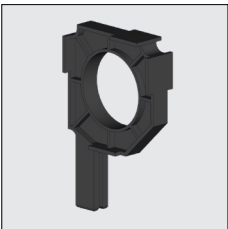
4452 125-000 Nylon centre slide bearing for Screen 75, spindle hole 50 mm
(Electro roller 50 mm en steel 48 mm)

4452 650-068 Idem, spindle hole 51 mm (electro roller 51 mm)

Headbox 85



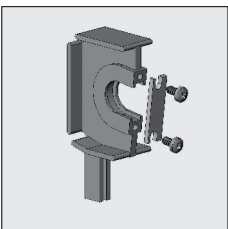
4452 115-068 Alu centre bracket Excellent 85



4452 128-000 Nylon centre slide bearing for Excellent 85, spindle hole 51 mm
(Electro roller 50 en 51 mm en steel 48 mm)

4452 129-000 Idem, spindle hole 65 mm (steel 63 mm)

Headbox 95



4452 116-068 Alu centre bracket Excellent 95



4452 127-000 Nylon centre slide bearing for Excellent 95, spindle hole 65 mm

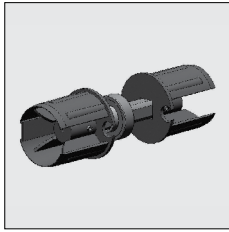
= Article will be sold out. Special orders remain possible.



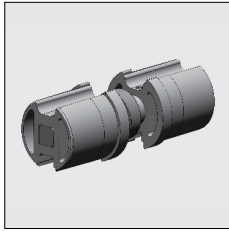
Markisolette Excellent®

Part number	Description	Paint finish	Length in m ¹ Pack. Unit.
-------------	-------------	--------------	---

Headbox 75-85-95



4452 182-068 Couple bearing for ScreenExcellent with nylon roller bungs 48/50.



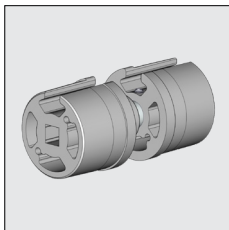
4469 055-068 Idem, with alu extruded roller bungs 48/50

100



4452 184-068 Couple bearing ScreenExcellent with Nylon roller bungs 63/65

10

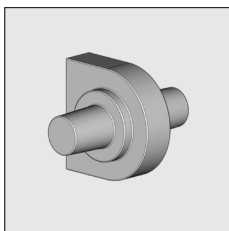


4469 065-068 Idem, with alu (extruded) roller bungs 63

50

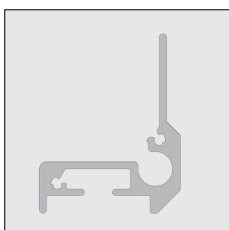
Note: With nylon couple bearing, couple max. 1x !

**If there are more screens in one cover with individual operation.
Please apply the double spindle below:**



4452 188-000 Double spindle 12 mm for centre bracket

Further items are specific to the Markisolette and can be used with headbox 75, 85 en 95.



6297 340-000 Alu front profile

Mill finish

6,0

6297 340-016 Idem

Silver anodized

6,0

6297 340-006 Idem

RAL 9010 pure white

6,0

6297 340-901 Idem

RAL 9001 cream

6,0

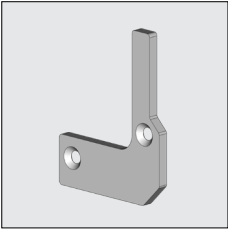

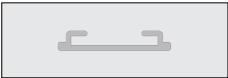
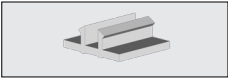
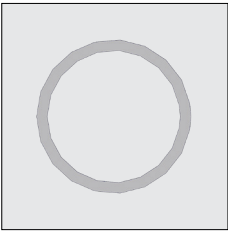
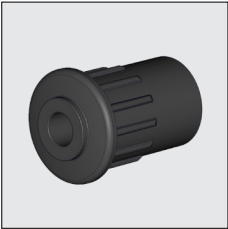

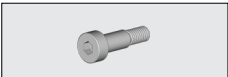





6253 072-000 Steel reinforcement strip 16 x 5 mm for front profile

Zinc-plated

3,0



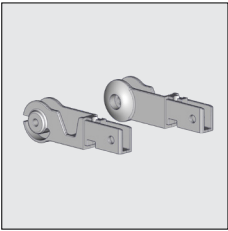

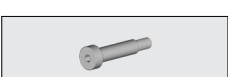


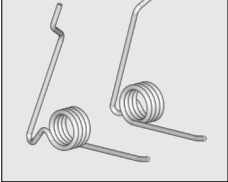

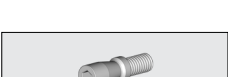


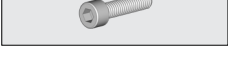
= Article will be sold out. Special orders remain possible.

Part number	Description	Paint finish	Length in m ¹ Pack. Unit.
	4453 362-000 Alu end cap for front profile	Mill finish	
	4453 362-001 Idem	Silver anodized	
	4453 362-006 Idem	RAL 9010 pure white	
	4453 362-901 Idem	RAL 9001 cream	
	4452 083-000 Plate screw countersunk Philips head 3,5 x 16 mm (To fasten the end cap to the front profile)		100
	6297 446-000 Alu cover profile for front profile	Mill finish	7,5
	6297 446-016 Idem	Silver anodized	7,5
	6297 446-006 Idem	RAL 9010 pure white	7,5
	6297 446-901 Idem	RAL 9001 cream	7,5
	4410 430-080 Nylon snap block for cover profile	Transparent	100
	6297 336-000 Alu support roller 19 x 22 mm	Mill finish	6,0
	6297 336-016 Idem	Silver anodized	6,0
	6297 336-006 Idem	RAL 9010 pure white	6,0
	6297 336-901 Idem	RAL 9001 cream	6,0
	4453 330-905 Nylon bearing roller bung for support roller	Black	
	4453 365-001 Alu fastening block for support roller	Silver anodized	
	4453 348-000 Stainless steel set M 5 screw 6 X 12 mm (To fasten bearing roller bung support roller to the fastening block)		
	4000 155-000 Plate screw countersunk Philips head M 6 x 22 mm (To fasten the fastening block to the guiding profile)		100
	4000 387-000 Lock nut M 6 (To fasten the fastening block to the guiding profile)		100
	4453 335-905 Nylon end cap for guiding profile (Is placed between the support roller and under the hinge).	Black	

= Article will be sold out. Special orders remain possible.

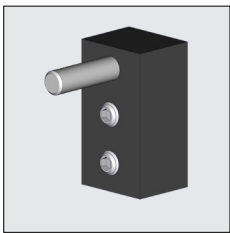
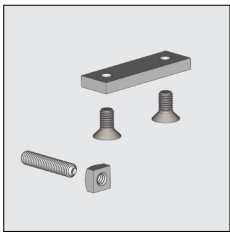
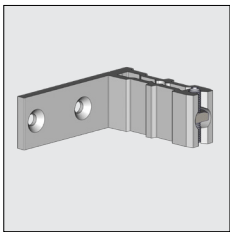
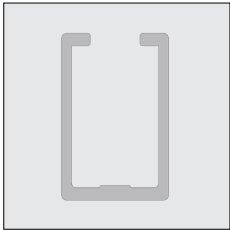


Markisolette Excellent®

Part number	Description	Paint finish	Length in m ¹ Pack. Unit.
	4453 367-001 Alu guiding profile (for the projection of 50 cm) (provided with holes for fastening the support roller and the hinge piece)	Silver anodized	
	6297 320-016 Alu guiding profile In case one would like to a different projection than the standard projection of -50 cm. On demand we can also make it in a different length including mounting holes.	Silver anodized	6,0
	4453 340-000 Alu hinge piece, left	Mill finish	
	4453 342-000 Idem, right	Mill finish	
	4453 340-008 Alu hinge piece, left	RAL 7035 light grey	
	4453 342-008 Idem, right	RAL 7035 light grey	
	4453 340-006 Alu hinge piece, left	RAL 9010 pure white	
	4453 342-006 Idem, right	RAL 9010 pure white	
	4453 340-901 Alu hinge piece, left	RAL 9001 cream	
	4453 342-901 Idem, right	RAL 9001 cream	
	4453 350-000 Stainless steel set M 6 screw 8 X 30 mm (To fasten the hinge piece to the guiding profile)		
	4210 499-080 Nylon washer 8.1 x 14 x 1 mm for set screw 4453 350-000 (2 x per screw) These washer is also in wholesale packages available (500 pieces) Article no. 4210 499-000.		50
	4453 355-000 Projection spring, left		
	4453 357-000 Idem, right		
	4453 366-905 Nylon filling roll for projection spring/hinge piece	Black	
	4453 750-000 Stopper for projection spring (Will be mounted to the guiding profile)		
	4000 387-000 Lock nut M 6 (To fasten the hinge piece with projection spring to the guiding profile and to fasten the stopper with projection spring to the guiding profile)		100
	4410 239-000 Socket-head bolt M 6 x 25 mm (To fasten the hinge piece to the projection spring)		100
	4212 248-000 Square nut M 6 (To fasten the hinge piece to the projection spring)		200

= Article will be sold out. Special orders remain possible.

Part number	Description	Paint finish	Length in m ¹ Pack. Unit.
6296 338-000	Alu droparm projection profile	Mill finish	7,0
6296 340-000	Idem	Mill finish	7,5
6296 338-016	Alu droparm projection profile	Silver anodized	7,0
6296 340-016	Idem	Silver anodized	7,5
6296 338-006	Alu droparm projection profile	RAL 9010 pure white	7,0
6296 340-006	Idem	RAL 9010 pure white	7,5
6296 338-901	Alu droparm projection profile	RAL 9001 cream	7,0
6296 340-901	Idem	RAL 9001 cream	7,5
4410 471-090	Alu top piece	Mill finish	
4410 471-001	Idem	Silver anodized	
4410 471-006	Idem	RAL 9010 pure white	
4410 471-901	Idem	RAL 9001 cream	
4410 483-068	Fastening kit for top piece		10
4453 327-068	Nylon locking block for the screen guiding profile. Allows you to determine the projection of the screen. The pin falls in the recess of the hinge and blocks the screen when it is projecting.		



Further requirements:
- Rollers refer to chapter 1



